

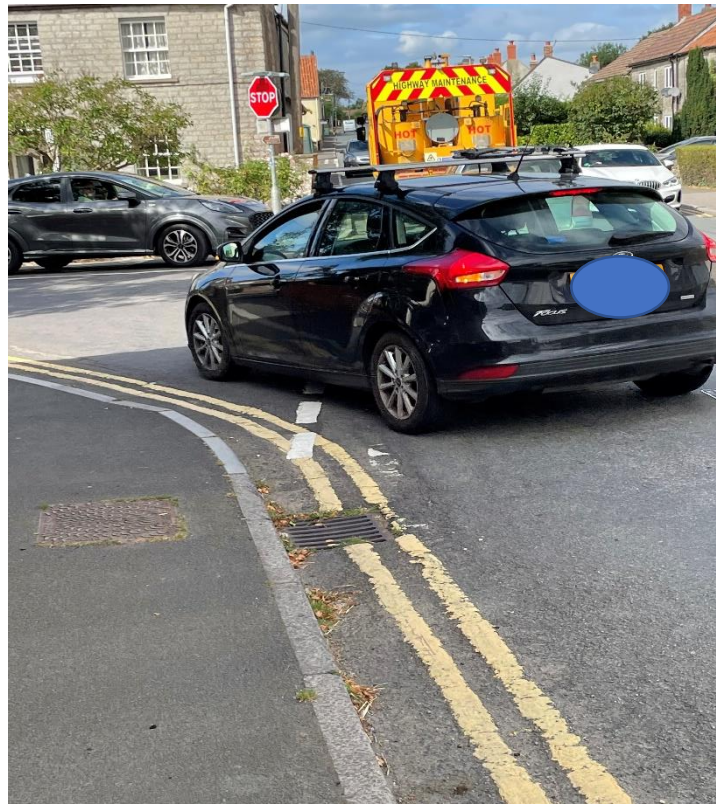
SHOCK

STOP HOUSING OBLITERATING THE CHARACTER OF KEINTON

**SCHEDULE 1
TO
HIGHWAYS/TRAFFIC SUBMISSION**

ROAD TRAFFIC ACCIDENTS

(B3153)



RECORD OF CRASHES

B3153- LYDFORD TO SOMERTON (B3151)

[This list is based on eye-witness recollection of aftermath by local residents and/or CrashMap data. It contains 8 fatalities.]

1. Lydford traffic lights- motorcyclist fatality (2017?).
2. Castle Street- southside crash barrier railings displaced and damaged following vehicle collision (2019).
3. Castle Street - the railings outside Teasel Cottage were taken out in a crash. Some of the railings went through the living room window of Teasel Cottage, narrowly missing a resident inside (2020).
4. Post Office, Castle Street- parked bicycle (with infant in baby seat) hooked up by car and dragged along road (1980s).
5. Castle Street - a commuter from Castle Cary Station drove straight into a resident's car outside Keinton House. It wrote off both cars, pushed a third one across the pavement and an ambulance had to attend for the driver (2018).
6. Castle Street - a resident had the side of her parked car hit and it was a write off. Despite being told the name of the coach firm and that it was on a job for a local private school, the police couldn't track the driver. Hence, the resident's insurance had to cover the costs (2016).
7. Castle Street - the people opposite the phone box have had two, or three cars written off in different collisions in the past ten years. (2010s)
8. Castle Street, Keinton Mandeville- motorcyclist fatality (1982).
9. Castle Street, Keinton Mandeville- collision with Ebenezer Cottage wall (2011).
10. Coombe Hill/High Street, Keinton Mandeville- demolition of sign post (2020).
11. Village shop, Keinton Mandeville- shop window broken by loose agricultural machinery (2017).
12. High Street, Keinton Mandeville- parked BMW 'bounced' onto pavement when hit by passing van (2022).
13. West of Quarry Inn, Keinton Mandeville- pedestrian 'glanced' by westbound overtaking vehicle (2012).
14. Outside Dove Cottage, Keinton Mandeville- car in collision with articulated milk tanker (2016).

15. East of blind summit- pedestrian 'glanced' by passing car when putting dog on lead (2014?).
16. East of blind summit- car through hedge after confronting hedging tractor (2013?).
17. Kingweston- grain store- car of Millfield pupils overturned and caught fire: all occupants killed. (mid-1980s).
18. Kingweston- grain store- car in collision with turning tractor and trailer- driver killed (2004).
19. Kingweston- farm cottages, Lower Street- fatal collision (2000?).
20. Kingweston- Middle Farm corner- refuse truck drove into car- driver seriously injured (early 2000s).
21. Kingweston- Middle Farm- part of stone wall demolished by vehicle (year?)- (see wall for repairs).
22. Kingweston- Lower Farm- part of stone wall demolished by vehicle (year?).
23. Kingweston- New Road (junction with B3153)- 3 cars in fields north and south of B3153 (2018?).
24. Kingweston- opposite cottages- near the bend on B3153. Two teenage males were having a race in their cars when one driver hit the wall on the south side of the road and was killed instantly (early 2000s)
25. Kingweston- collisions outside the farm cottages on Lower Street with parked cars:
 - (i) visiting nurse's vehicle
 - (ii) resident's Land Rover
 - (iii) a drunk driver going into the curved wall at Middle Farm - vehicle left in the Grain Store Yard.
26. Christian Cross- eastbound car in collision with turning traffic (2020).
27. Christian Cross- collision with road signs, leading to renewal and re-siting (2018?).
28. Below Windmill Hill (the 'Snap')- westward- car in hedge after skidding on the muddy road. Elderly driver; was shaken up and bruised (2022).

SHOCK

September 2022